

HERE COMES THE SUN

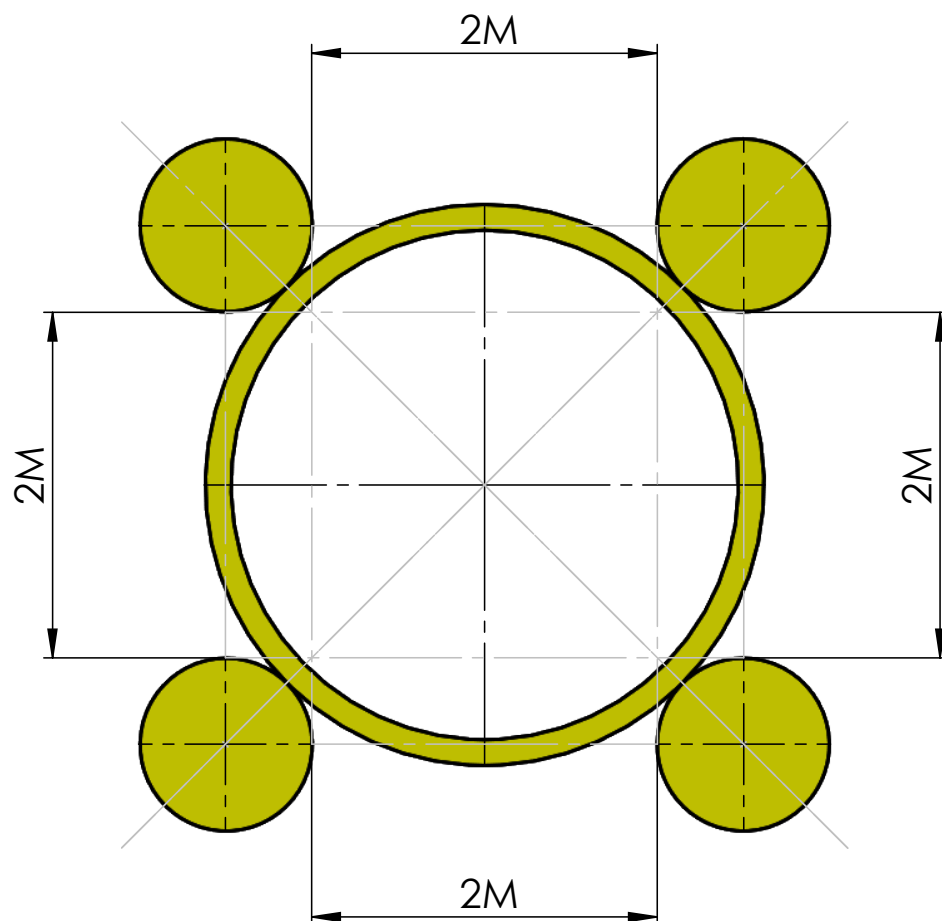


OPEN SOURCE BLANKET DESIGN

PAUL COCKSEGE STUDIO®



DIMENSIONS



WHAT YOU NEED

Template

on page 6 & 7

Fabric

We recommend a non-fraying material such as felt. You'll need approximately 4 sqm for the ring and 5 sqm for sitting circles - 9sqm in total.

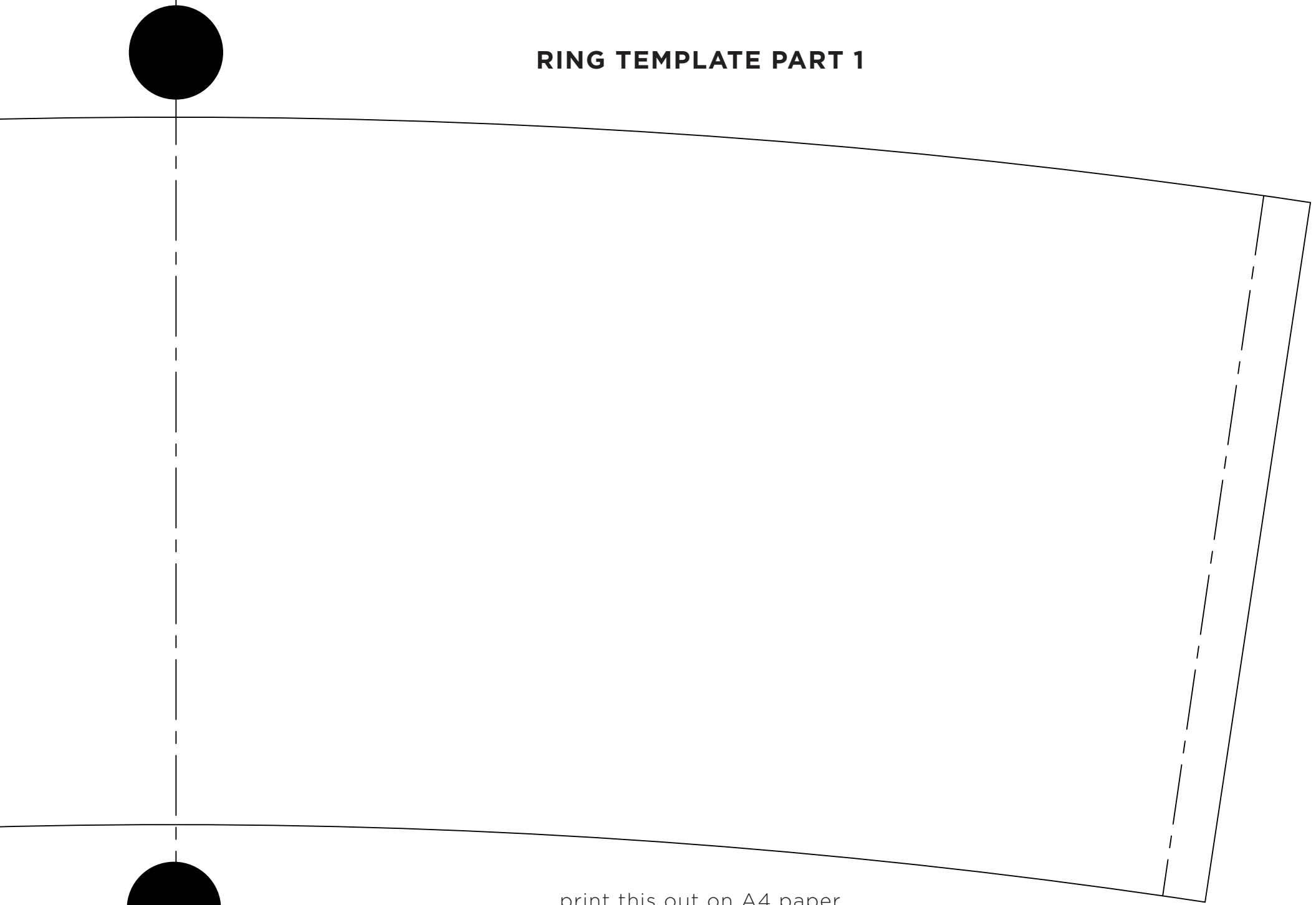
Tools

Sewing machine
Needle and thread
Pencil or marking chalk
Measuring tape
Pins
Sharp scissors
4 buttons
Cellotape or glue

STEP 1

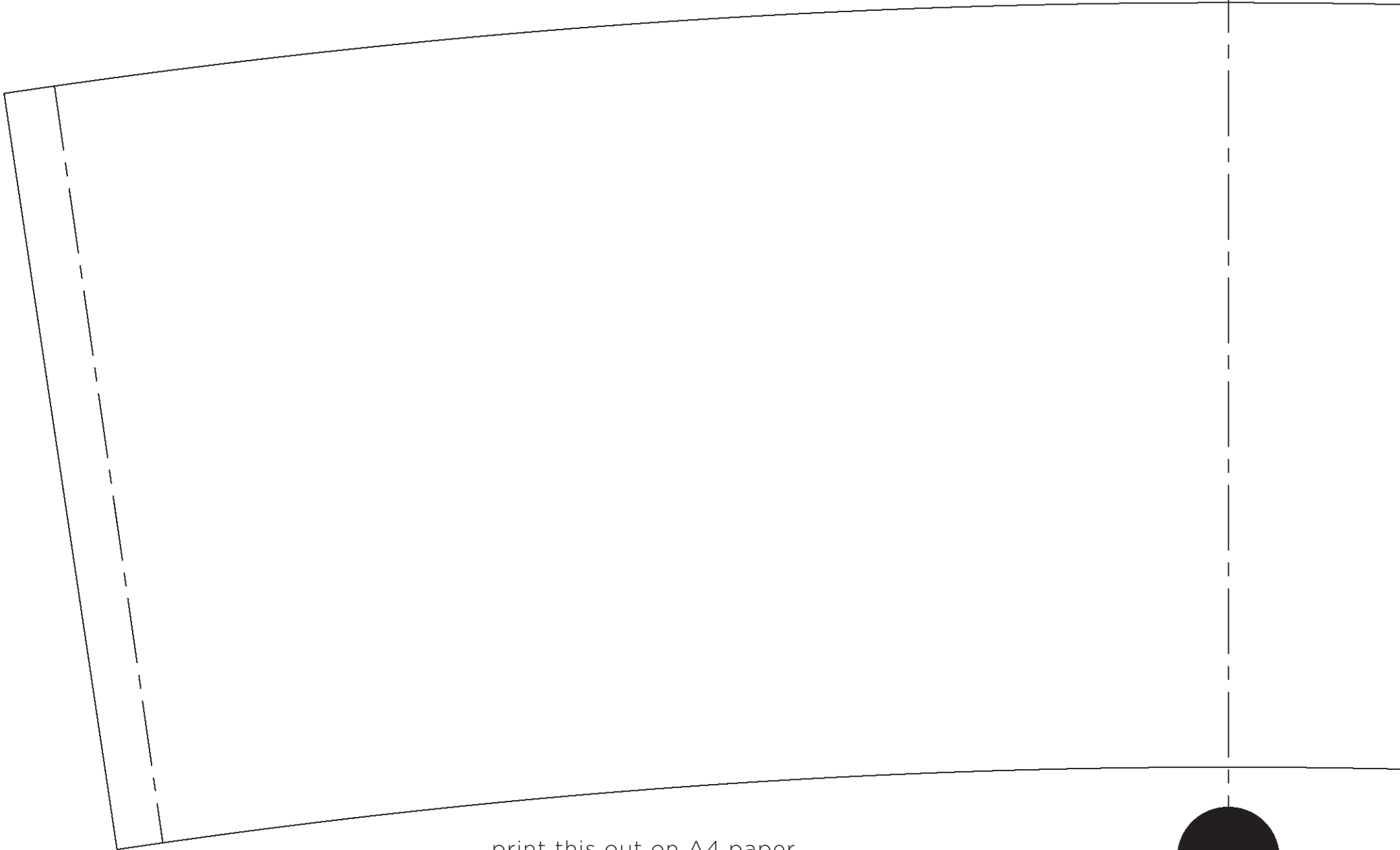
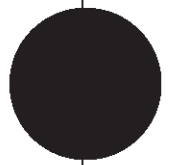
print part 1 and 2 of the ring template

RING TEMPLATE PART 1



print this out on A4 paper

RING TEMPLATE PART 2



print this out on A4 paper

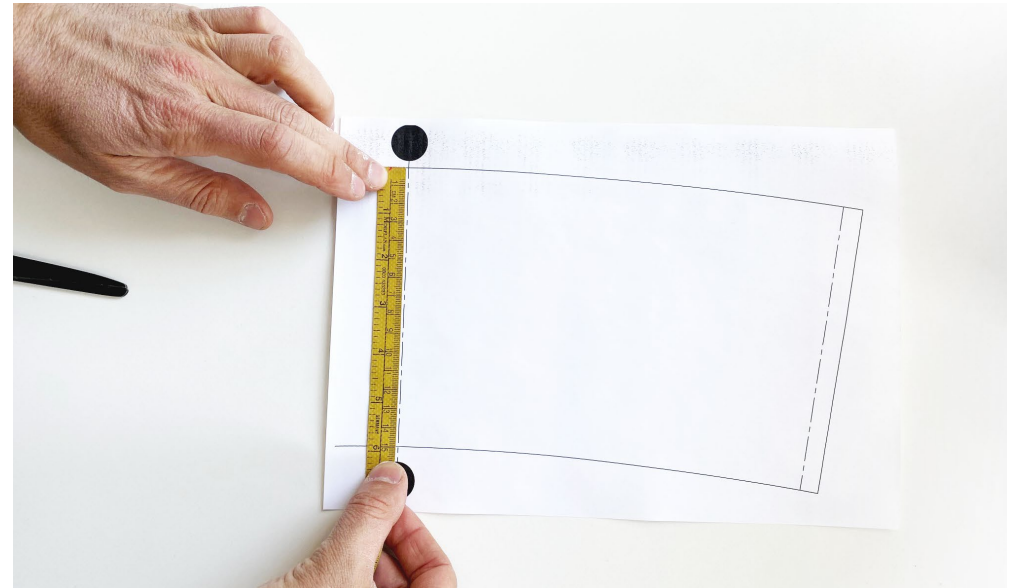


STEP 2

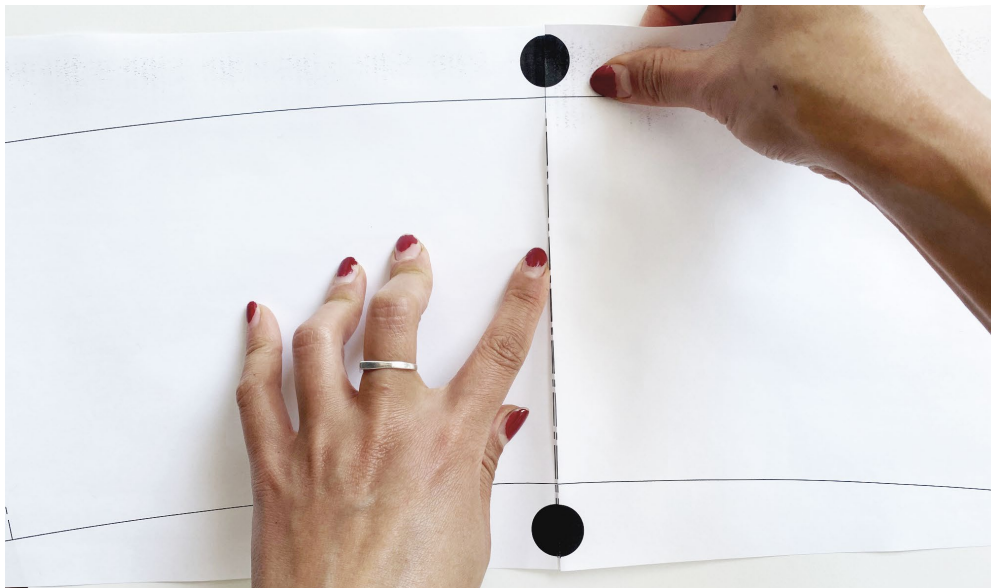
cut out the ring template



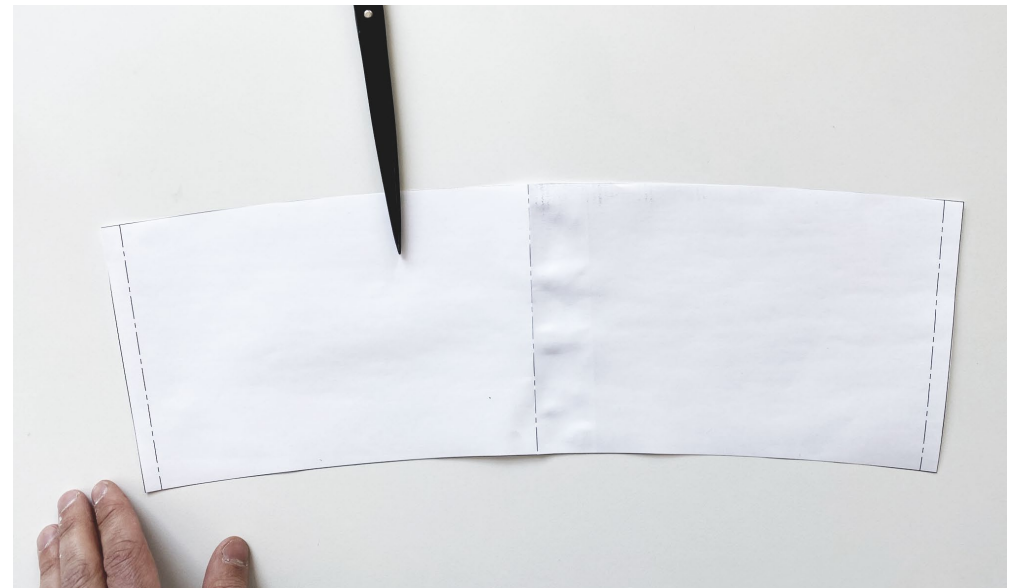
Print templates out on A4 paper



Ensure templates are the right size - they should measure 15 cm wide



Align circles and tape or glue together

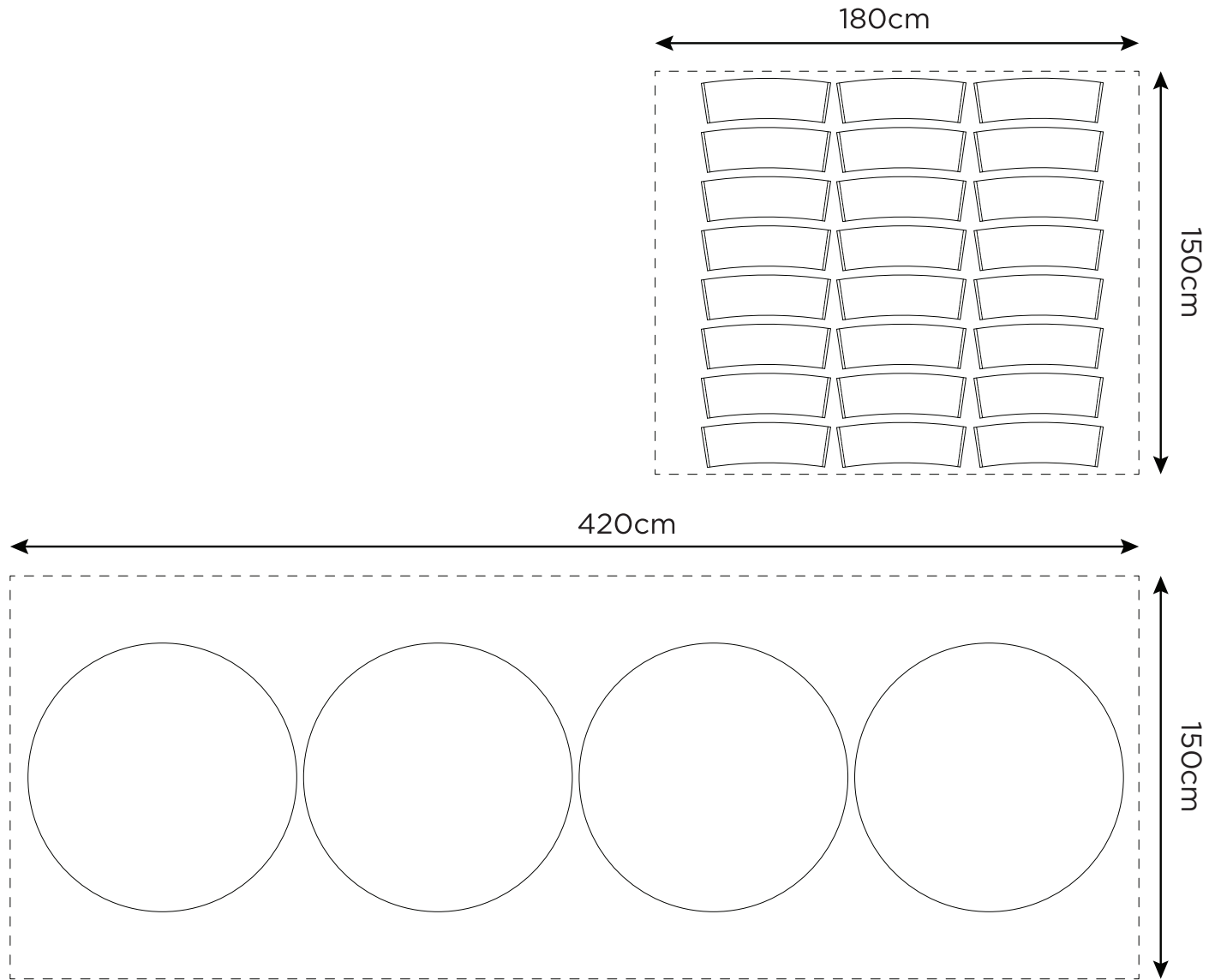


Cut out paper template around solid line (the circles will be removed)

STEP 3

cut out the ring fabric

CUTTING LAYOUT





Pin down the pattern to the chosen material



Cut the shape in the chosen material



Make sure you follow the exact shape of the pattern



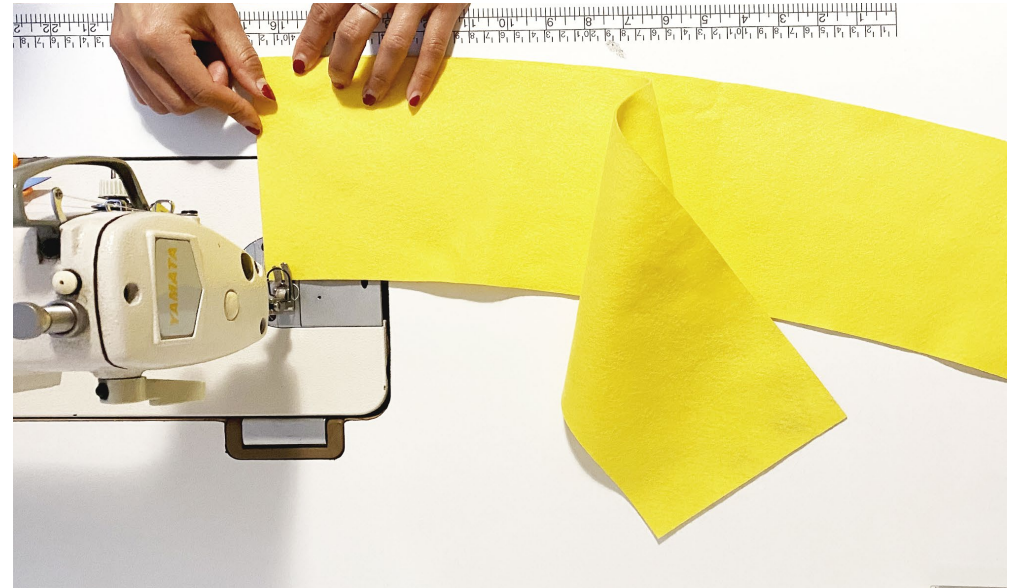
Make small cuts on the dotted lines to act as a guide for overlap when sewing together

STEP 4

sewing the ring



Using the same template, cut 22 parts



Layer 2 parts together aligning the overlap



Sew along the 1cm overlap, using the small cuts as a guide



Unfold the material



Iron the overlap to flatten the section



Repeat the process 21 times to achieve a full circle. Leave the ends open as this allows you to wrap the ring around a tree.



You should end up with a full circle

STEP 5

making the seating circles



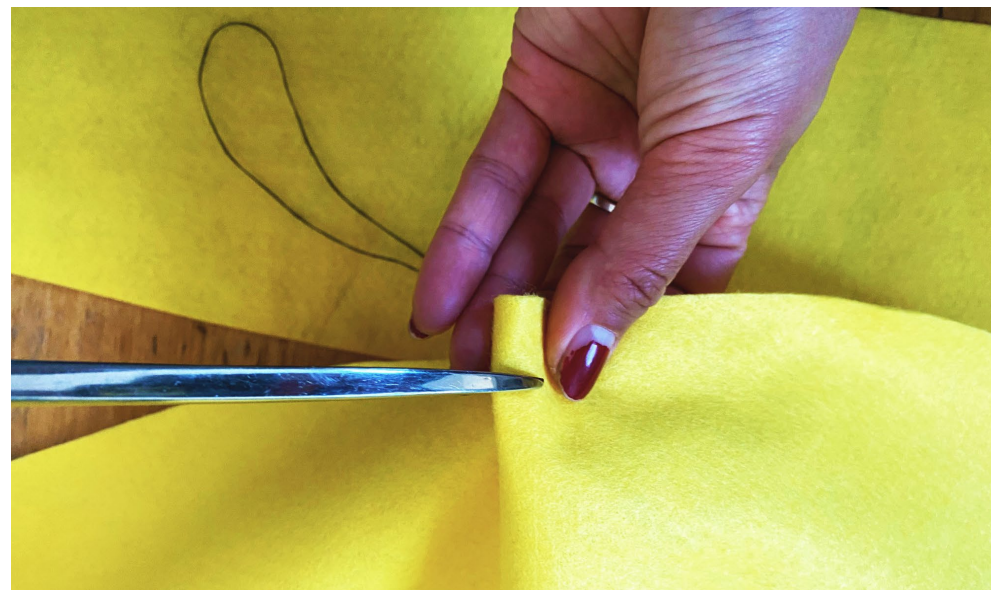
Fold your seating circle fabric in half. Mark out a half circle - it should have a radius of 500mm.



Cut out four half circles



Unfold - you should now have four 1-metre diameter circles

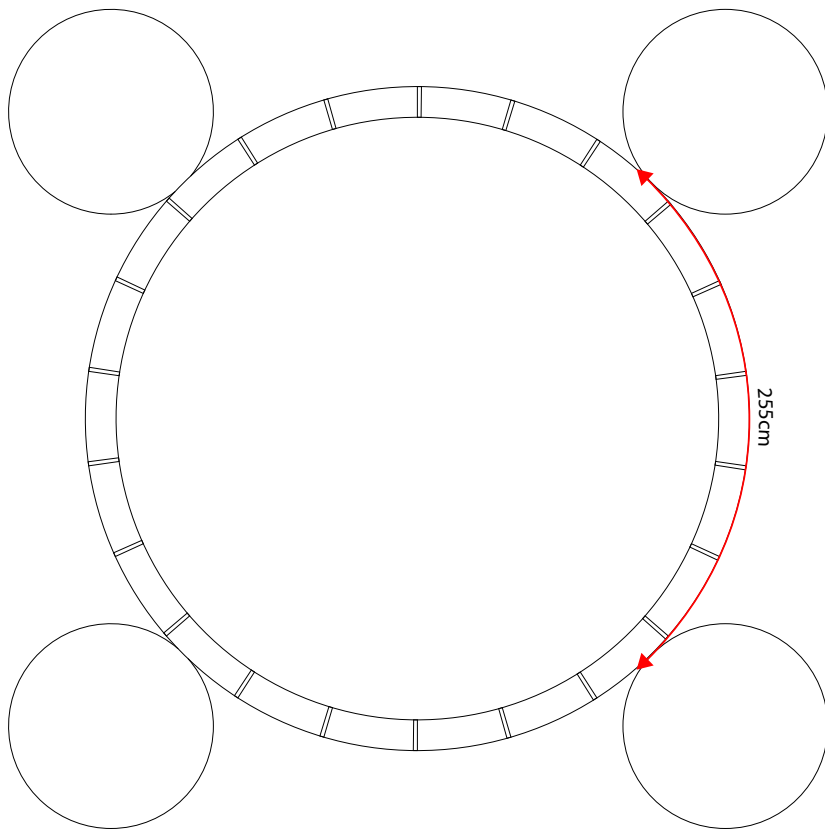


Cut a small slit, 10mm from the edge of the circle (this is where the button goes)

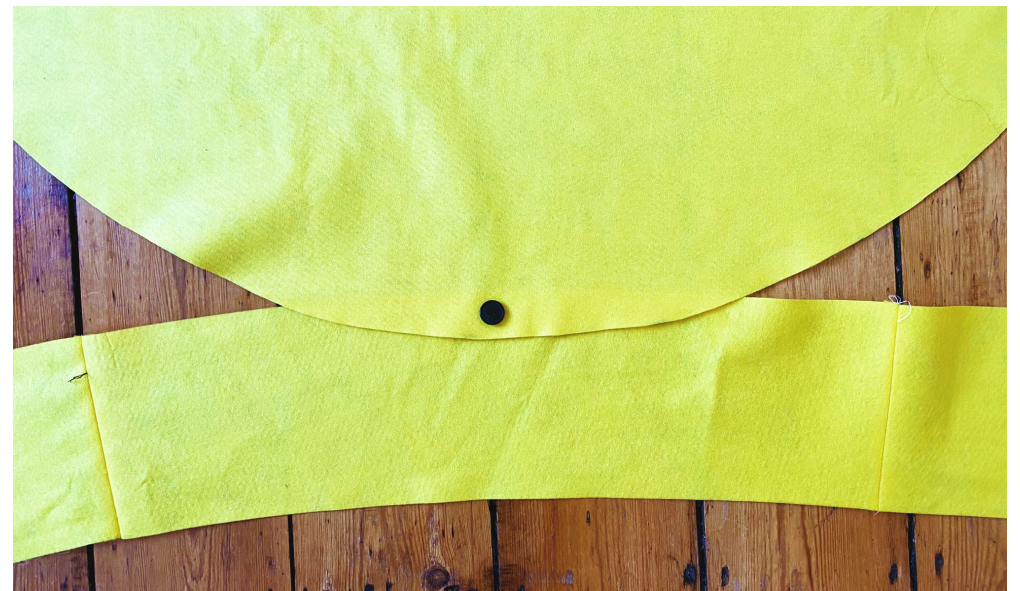
STEP 6

adding the buttons

TECHNICAL DRAWING



Attach four buttons to the edge of the ring, 1cm from the edge
They should be spaced out 255cm along the outer edge of the ring



Attach all 4 circles to the buttons



enjoy ☺
